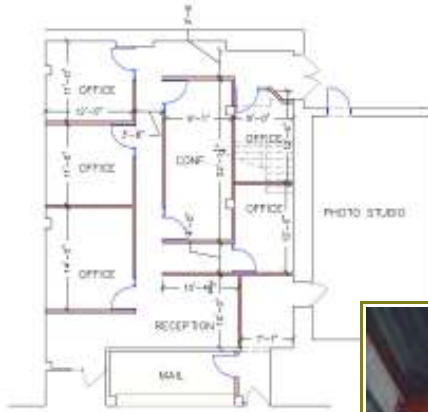


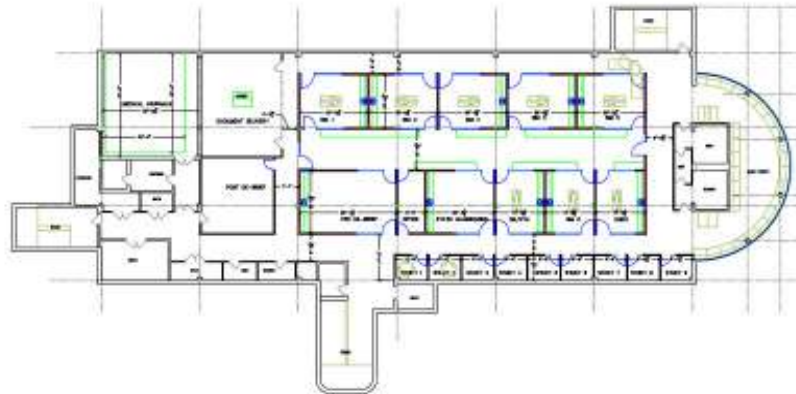
A. T. Still University

Still Building - Temporary Office for New Dental School
Kirksville, Missouri
2011-Under Costruction
Reference: Robert Ehrlich 660-626-2929



K. A. Shook Design, LLC was hired to provide design services to help the University accommodate their new dental school offices until the permanent building is constructed. The original space was a open library space that is now being transform into an office suite for the new dental school. To accomplish this goal a stair had to be removed. K. A. Shook Design provided code analysis, structural and space planning services for this project.

Design Study for the Connell Building Simulation Lab
Kirksville, Missouri
2011
Reference: Robert Ehrlich 660-626-2929



In 2011 K. A. Shook Design, LLC was hired to provide a design study and space planing for a state-of-the-art simulation lab which included ten human patient simulators in the basement of the Connell Building. Also included in the design were private study rooms, de-briefing classrooms and relocation of medical journals.

